

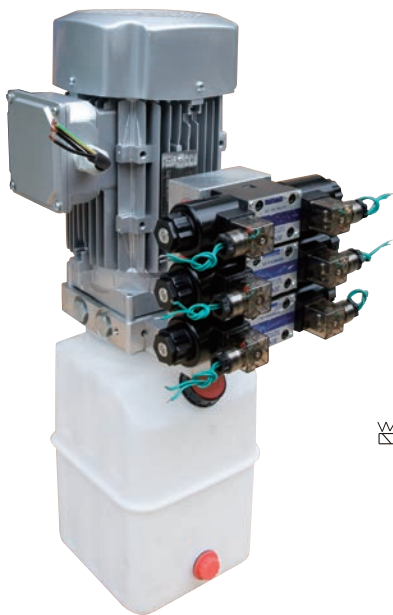
# 扒胎机动力单元 POWER UNIT FOR TIRE CHANGER

德力液压 **Deli**

## 简介 General Description

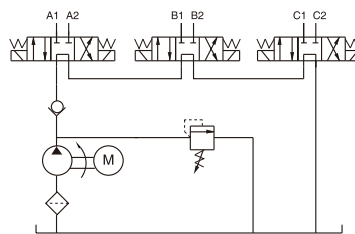
本液压动力单元集成了高压齿轮泵、电机、液压阀、油箱、液压阀块等液压元件，控制多组双作用油缸单独动作。

The hydraulic power unit integrates gear pump, AC motor, multi-functional manifold, valves, tank, etc. The solenoid valves in series connection control the extension and retracting of the double acting cylinders

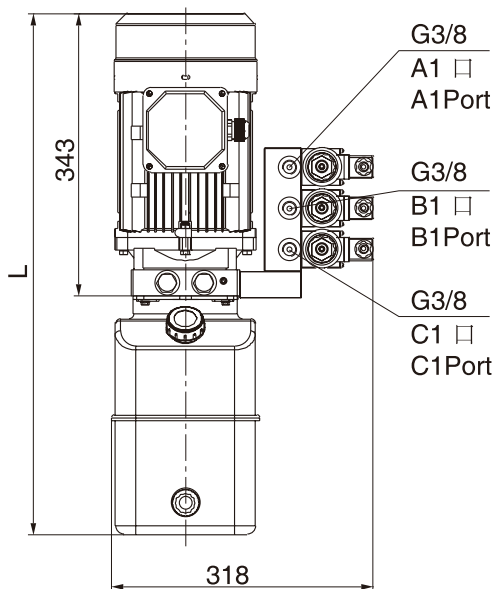
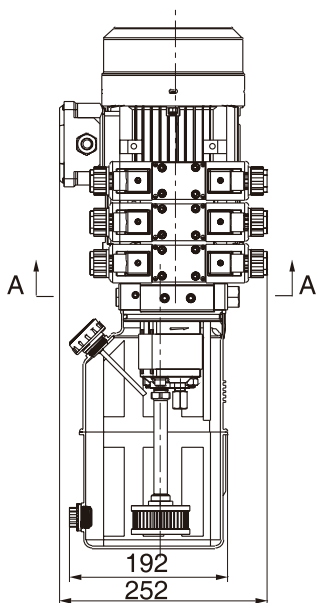
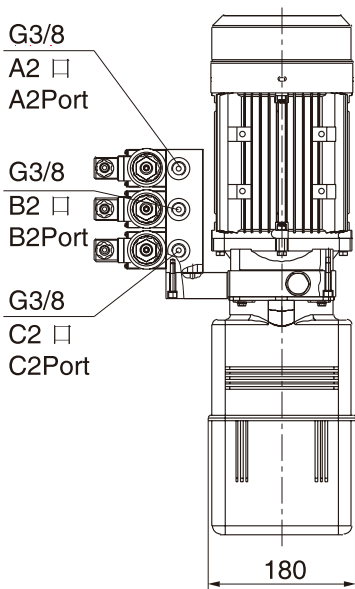
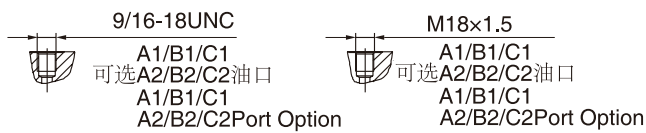


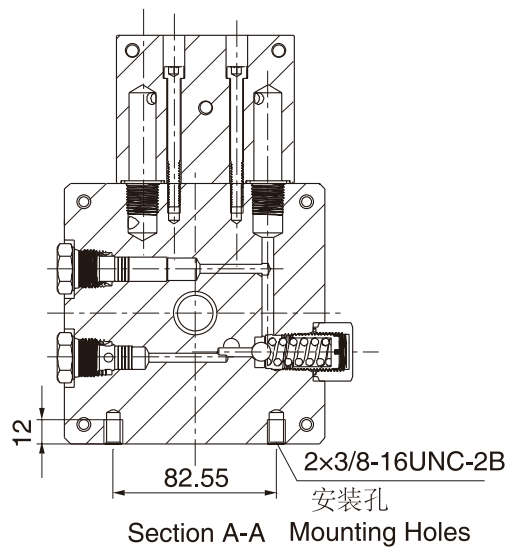
## 系统工作原理

Hydraulic Circuit Diagram



## 外形尺寸图 Outline Dimension





Section A-A Mounting Holes

### 型号规格说明 Model Specifications

Model 型号	Motor Volt 电机电压	Solenoid Valve Volt 电磁阀电压	Motor Power 电机功率	Rated Speed 额定转速	Displacement 油泵排量	System Pressure 溢流阀压力	Tank Capacity 油箱容量	L(mm)
YBZ5-F2.7B4G40/MNVBE1	380VAC	24VDC	1.5KW	1430 / 1650 PRM	2.7ml/r	20MPa	5L	633
YBZ5-F2.5B4G40/MNVBE1					2.5ml/r		6L	678
YBZ5-F2.1B4G40/MNVBE1		12VDC			2.1ml/r		8L	783

说明：如需不同流量的泵、压力、电机功率、油箱容量等系统参数，请查看液压力单元型号说明。

Remark: Please go to page 3 or consult our sales engineer for the different pump displacement, motor power or tank capacity.

### 注意事项 Special Notes

1. 此动力单元为S3工作制，不可连续运转，1分钟开，9分钟停。
2. 安装前必须保证油缸、油管、接头等液压元件清洁无任何杂质粘附。
3. 液压油粘度应为15~68CST，应清洁无杂质，推荐使用N46号液压油。
4. 首次启动运行系统后，应立即检查油箱中的油量是否充足。
5. 系统使用第一个100小时后，应更换液压油，以后每3000小时更换一次液压油。

1. The Ac motor is of S3 duty cycle, which can only work intermittently and repeatedly, i.e., 1 minute on and 9 minutes off.
2. Clean all the hydraulic components concerned before installation of the power unit.
3. Viscosity of the oil should be 15-68 cst and the oil should be clean and free of impurities, N46 hydraulic oil is recommended.
4. Check the oil level in the tank after the initial running of the power unit.
5. Oil changing is required after the initial 100 operation hours, afterwards once every 3000 hours.